

VISUAL
APPROACH CHART
ICAO

AD ELEV 46 FEET

BROMMA TOWER/INFO 118.100

INTENTIONALLY BLANK

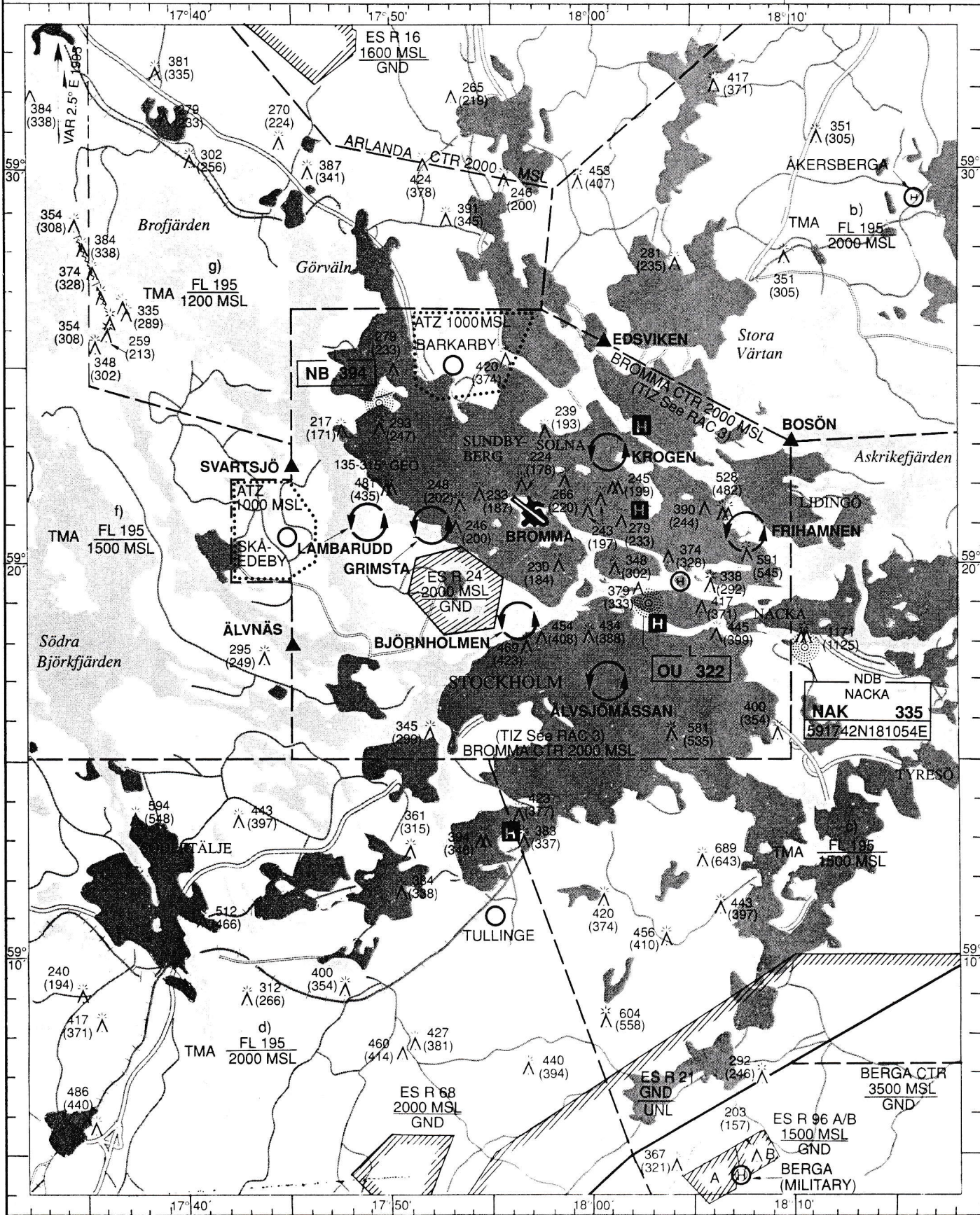
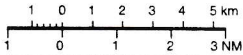
TAXI 121.600

ELEV and ALT in ft MSL 509
HGT in ft above AD ELEV (463)

STOCKHOLM CONTROL 120.150
BROMMA ATIS 122.45

STOCKHOLM/
BROMMA
SWEDEN

1:250 000



TRANSITION ALTITUDE 5000 MSL

PAPI see overleaf

THR-ELEV RWY 12 : 45 ft
RWY 30 : 40 ft

ATS Airspace Classification
TMA/CTR: Class C
TIA/TIZ: Class G
Ref AIP RAC 3-1 para 2.

LEGEND

See MAP 1

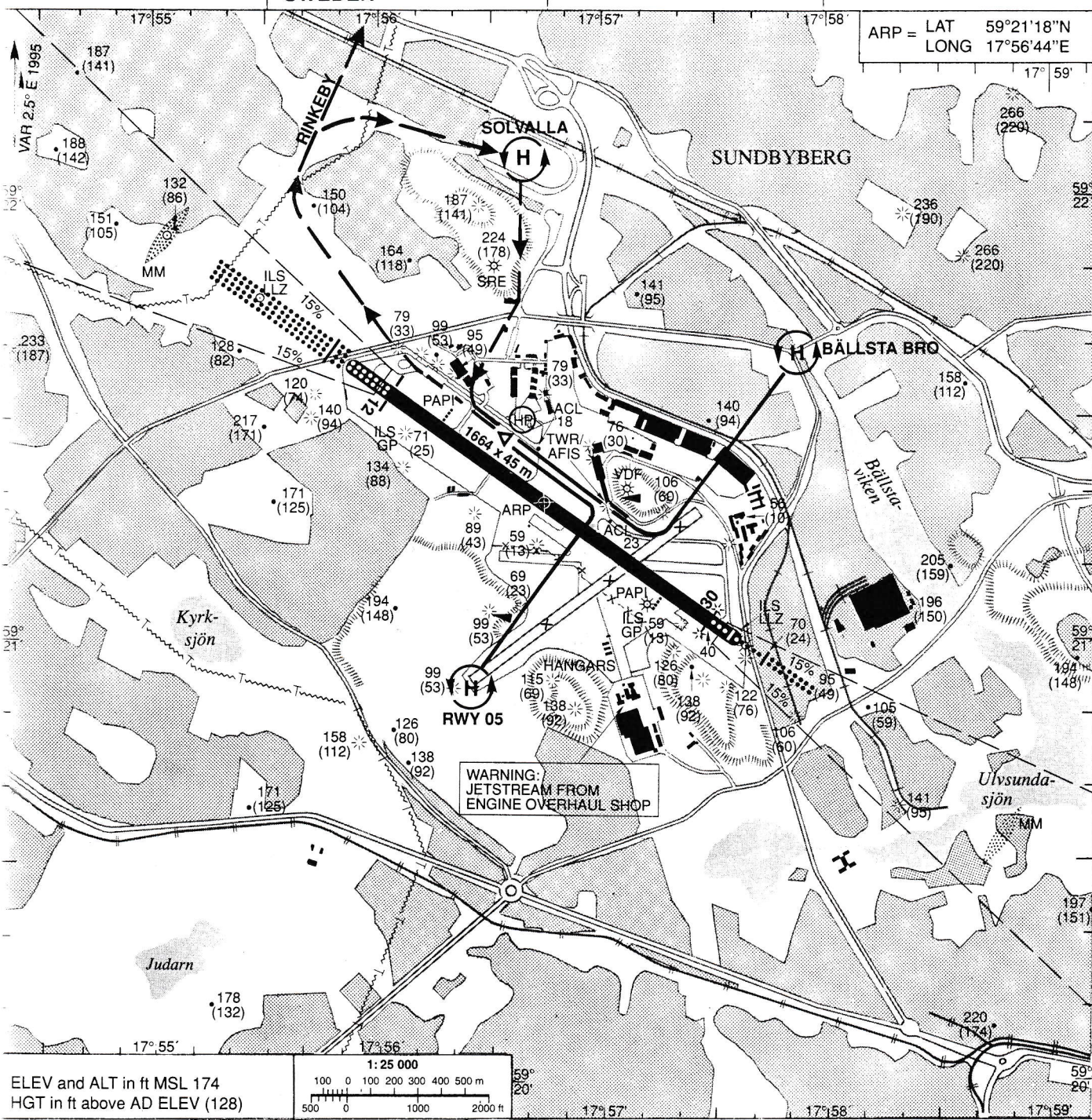
INTENTIONALLY BLANK

STOCKHOLM/BROMMA SWEDEN

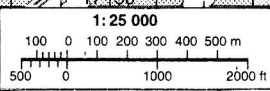
AD ELEV 46 FEET

LANDING CHART and HELICOPTER VFR-ROUTES

ARP = LAT 59°21'18"N
LONG 17°56'44"E



ELEV and ALT in ft MSL 174
HGT in ft above AD ELEV (128)



LIGHTING

PAPI	GP 3.50° (6.1%) MEHT 55.8 ft (17.0 m)	RWY 12
PAPI	GP 3.50° (6.1%) MEHT 37.7 ft (11.5 m)	RWY 30
APCH	LIH W 900 m LIH W 556 m	RWY 12
TRID-lights	LIL FLG W	RWY 30
THR	LIL, LIH G	RWY 12, 30
RWY edge	LIL W YCZ 600 m	RWY 12, 30
RWY end	LIH W	RWY 12, 30
TFC	LIL, LIH R	RWY 12, 30
TWY	G R for taxiing aircraft	RWY 30
OBST	LIL B	
OBST	LIL R	
Remark	PAPI and LIH can be dimmed	

REMARK

THR RWY 12 and 30 permanently displaced.
Available landing distance 1664 m.
RWY 05/23 closed.

RUNWAY BEARINGS

12/30 = GEO 125.0°/305.0°; MAG 122°/302°

THR COORDINATES

THR 12 = 59°21'33"N 17°56'00"E
THR 30 = 59°21'03"N 17°57'27"E

GROUND SERVICES

Customs, Immigration, Passenger accommodations
TWR/AFIS, Hangarage Maintenance

SURFACE AND STRENGTH

See AGA 3

LEGEND

- Holdings for helicopters
- Two-way helicopter VFR-routes
- One-way helicopter VFR-routes
- Helicopter parking
- Start and landing area
No touchdown area